



MODELS 3115 - 3 TON FLOOR JACK

PART ORDER NUMBER	KIT DESCRIPTION	KIT INCLUDES	
		REF. #	DESCRIPTION
3115K10	HANDLE COMPLETE	1.1	CAP
		1.2	COMPRESSION SPRING
		1.3	DEFLECTOR ROD
		1.4	SCREW ROD
		1.5	CONTROL ROD - HANDLE
3115K71	SADDLE	7.1	SADDLE
3115K17	HANDLE RETAINER SCREW	1.6	WASHER
		1.7	FASTENING SCREW
3115KHU	HYDRAULIC UNIT	3.1	FILTER
		3.2	WASHER
		3.3	OUTSIDE TUBE
		3.4	WASHER
		3.5	VALVE SEAT
		3.6	NEEDLE
		3.7	WIRE
		3.8	NUT
		3.9	SPRING
		3.10	SCREW ROD
		3.11	RUBBER RING
		3.12	RUBBER RING
		3.13	CYLINDER BODY
		3.14	PAPER WASHER
		3.15	COVER PLATE
		3.16	BOLT
		3.17	SCREW
		3.18	WASHER
		3.19	SEAL WASHER
		3.20	BOLT
		3.21	NUT
		3.22	CONNECTING BRUSH
		3.23	COTTER PIN
		3.24	CONNECTING ROD
		3.25	DRIVING ROD
		3.26	COTTER PIN
		3.27	PIN
		3.28	PISTON ROD
		3.29	LOCKING NUT
		3.30	DUST RING
3.31	STOP RING		
3.32	SEAL RING		
3.33	BUSH PREVENT RING		
6.3	SEAL RING		
6.4	LARGE NUT		
6.5	RING		
6.6	WASHER		
6.7	BUSHING		
6.8	SEAL RING		
6.9	PISTON		
6.10	RUBBER CUP		

continued

DO NOT COPY OR DISTRIBUTE THIS MATERIAL WITHOUT PERMISSION OF AFF, INC.



MODELS 3115 - 3 TON FLOOR JACK

PART ORDER NUMBER	KIT DESCRIPTION	KIT INCLUDES	
		REF. #	DESCRIPTION
3115KHU	continued HYDRAULIC UNIT	6.11	STOP RING
		6.12	SPRING
		6.13	PISTON ROD
		6.14	STEEL BALL
		6.15	PUSH NEEDLE
		6.16	VALVE SEAT
		6.17	SCREW
		6.18	SPRING
		6.20	OUTER BODY
		6.22	STEEL BALL
		6.23	SMALL PUSH ROD
		6.24	STEEL BALL
		6.25	LARGE BALL ROD
		6.26	WASHER
		6.27	BOLT
		6.28	STEEL BALL
		6.29	VALVE SEAT
		6.30	SPRING
		3115K40	CASTER COMPLETE
4.2	WHEEL COVER		
4.3	GREASE FITTING		
4.4	WASHER		
4.5	SCREW		
4.6	BEARING COVER		
4.7	STEEL BALL		
4.8	BEARING HOLDER		
4.9	WHEEL FORK		
4.10	WHEEL		
4.11	RIVET		
3115K50	FRONT WHEEL COMPLETE	5.4	WHEEL
		5.7	STOP RING
		5.8	SPLIT RING
3115K29	CAP SET	2.1	FOOT PEDAL
		2.2	CIRCLIP
		2.3	PIN
		2.4	FORK MEMBER
		2.5	BUSH
		2.6	BASE
		2.7	SPRING
		2.8	PIN
		2.9	CAP
		2.10	SHAFT
		2.11	SCREW X 4
		2.12	WASHER X 4
		2.13	WASHER
		2.14	CLAMP RING

DO NOT COPY OR DISTRIBUTE THIS MATERIAL WITHOUT PERMISSION OF AFF, INC.



MODELS 3115 - 3 TON FLOOR JACK

PART ORDER NUMBER	KIT DESCRIPTION	KIT INCLUDES	
		REF. #	DESCRIPTION
3115KRK	REPAIR KIT	3.11	RUBBER RING
		3.12	RUBBER RING
		3.14	PAPER WASHER
		3.18	SEAL WASHER
		3.19	SEAL WASHER
		3.30	DUST RING
		3.31	STOP RING
		3.32	SEAL RING
		3.33	BUSH PREVENT RING
		6.3	SEAL RING (2) REQUIRED
		6.8	SEAL RING
		6.1	RUBBER CAP
		6.11	STOP RING
		6.14	STEEL BALL
		6.22	STEEL BALL
		6.24	STEEL BALL
		6.26	WASHER
		6.28	STEEL BALL
		6.3	SPRING
6.33	SEAL RING		
NOT AVAILABLE		2.1	FOOT PEDAL
NOT AVAILABLE		2.2	WIRE
NOT AVAILABLE		2.3	PIN
NOT AVAILABLE		2.4	FORK MEMBER
NOT AVAILABLE		2.5	BUSH
NOT AVAILABLE		2.6	BASE
NOT AVAILABLE		2.7	SPRING
NOT AVAILABLE		2.8	PIN
NOT AVAILABLE		2.9	CAP
NOT AVAILABLE		2.10	SHAFT
NOT AVAILABLE		2.11	SCREW
NOT AVAILABLE		2.12	WASHER
NOT AVAILABLE		2.13	WASHER
NOT AVAILABLE		2.14	CLAMP RING
NOT AVAILABLE		5.1	AXLE
NOT AVAILABLE		5.2	NUT
NOT AVAILABLE		5.3	STOP RING
NOT AVAILABLE		6.1	JOINT
NOT AVAILABLE		6.2	SCREW
NOT AVAILABLE		7.2	SADDLE CARRIER
NOT AVAILABLE		7.3	AXLE
NOT AVAILABLE		7.4	LEVEL SUPPORTING ROD
NOT AVAILABLE		7.5	AXLE
NOT AVAILABLE		7.6	ROCKER
NOT AVAILABLE		7.7	BOLT
NOT AVAILABLE		7.8	AXLE
NOT AVAILABLE		7.9	AXLE

DO NOT COPY OR DISTRIBUTE THIS MATERIAL WITHOUT PERMISSION OF AFF, INC.



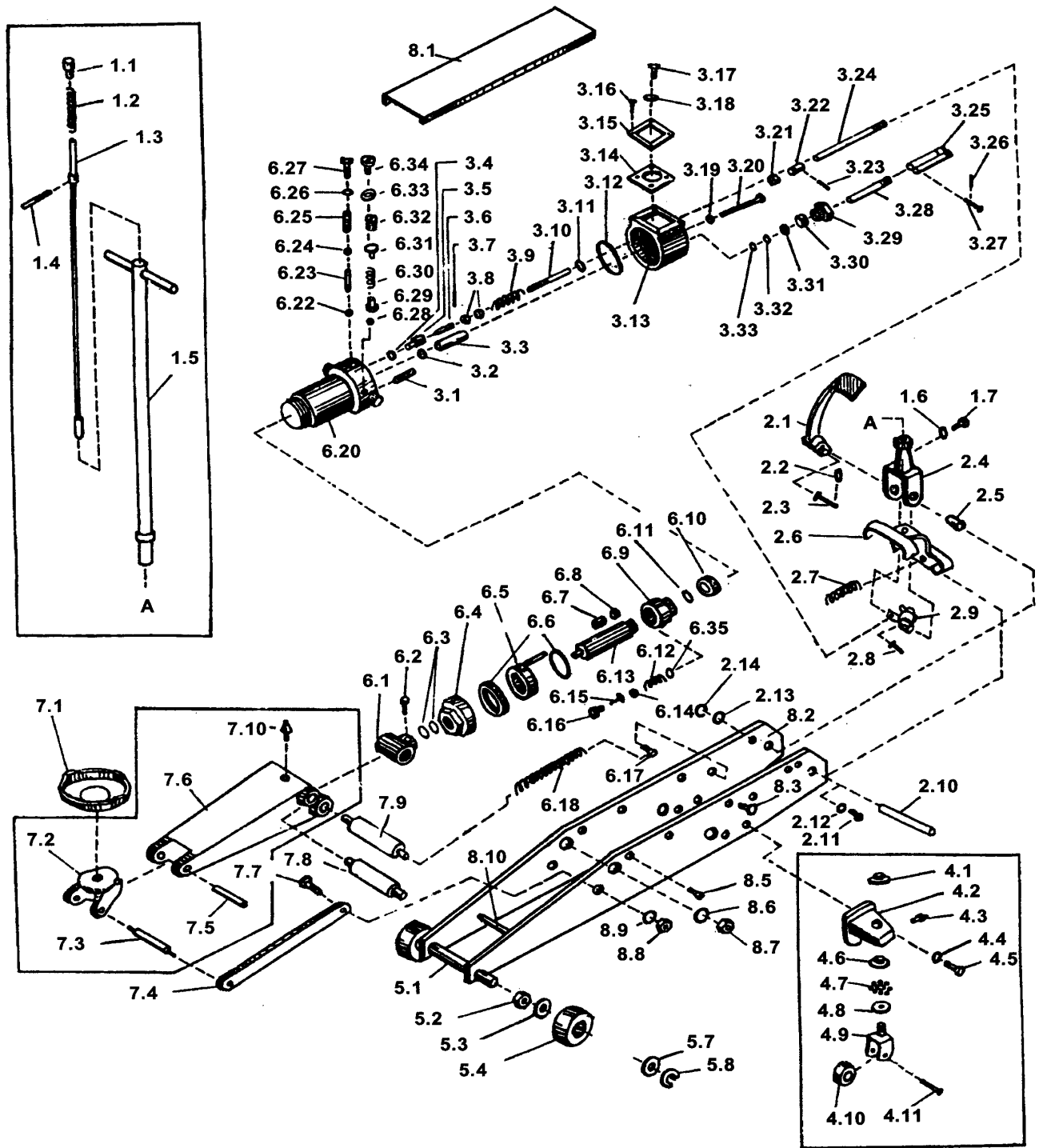
MODELS 3115 - 3 TON FLOOR JACK

UPDATED 7-05

PART		KIT INCLUDES	
ORDER NUMBER	KIT DESCRIPTION	REF. #	DESCRIPTION
NOT AVAILABLE		7.10	GREASE FITTING
NOT AVAILABLE		8.1	COVER PLATE
NOT AVAILABLE		8.2	SIDE PLATE
NOT AVAILABLE		8.3	RIVET
NOT AVAILABLE		8.5	SCREW
NOT AVAILABLE		8.6	WASHER
NOT AVAILABLE		8.7	NUT
NOT AVAILABLE		8.8	NUT
NOT AVAILABLE		8.9	WASHER
NOT AVAILABLE		8.10	LIMITER AXLE

*** ONLY PARTS WITH A "PART ORDER NUMBER" ARE AVAILABLE FOR SALE.
DO NOT COPY OR DISTRIBUTE THIS MATERIAL WITHOUT PERMISSION OF AFF, INC.**

MODELS 3115 - 3 TON FLOOR JACK



DO NOT COPY OR DISTRIBUTE THIS MATERIAL WITHOUT PERMISSION OF AFF, INC.