



MODEL 3190B - 1,100 lb. Transmission Jack

UPDATED 9-05

PART		KIT INCLUDES	
ORDER NUMBER	KIT DESCRIPTION	REF. #	DESCRIPTION
3190BK02C	CYLINDER KIT	1	BASE
		2	CYLINDER
		3	RESERVOIR
		7	O-RING 65-5.7
		8	RAM
		9	O-RING 140-5.7
		10	TOP NUT
		11	PACKING
		12	O-RING 65-3.1
		13	FLANGE
		14	O-RING 60-3.1
		15	DUST SEAL
		16	SPRING WASHER M10 (QTY 4)
		17	BOLT M10-30 (QTY 4)
		18	RETAINER, RAM
		19	RAM
		20	O-RING 48-3.5
		21	TOP NUT
		22	O-RING 41-3.5 (QTY 2)
23	DUST SEAL		
46	O-RING (QTY 2)		
47	AIR VENT VALVE ASSEMBLY		
105	SHIPPING PLUG		
110	SET SCREW		
111	STEEL BALL 3/16		
112	SCREW M5-6		
3190BKRK	REPAIR KIT	7	O-RING 65-5.7
		9	O-RING 140-5.7
		11	PACKING
		12	O-RING
		14	O-RING 60-3.1
		15	DUST SEAL
		16	WASHER 10
		20	O-RING 48-3.5
		22	O-RING 41-3.5
		23	DUST SEAL
		25	STEEL BALL 8 (2 REQ.)
		26	COPPER WASHER
		28	O-RING 36-3.5
		29	DUST SEAL
		32	SEAL WASHER
		34	O-RING O-RING 12-1.9
		44	O-RING (2 REQ.) 11-1.9
		46	O-RING
		106	O-RING
111	STEEL BALL 3/16		
121	O-RING 11-1.9		

DO NOT COPY OR DISTRIBUTE THIS MATERIAL WITHOUT PERMISSION OF AFF, INC.

*** ONLY PARTS WITH A "PART ORDER NUMBER" ARE AVAILABLE.**



MODEL 3190B - 1,100 lb. Transmission Jack

UPDATED 9-05

PART		KIT INCLUDES	
		2	
ORDER NUMBER	KIT DESCRIPTION	REF. #	DESCRIPTION
3190BK37C	RELEASE VALVE KIT	34	O-RING 12-1.9
		35	RELEASE VALVE
		36	SPRING
		37	BASE. RELEASE VALVE
		38	PIN 6-32
		39	PEDAL RELEASE VALVE
		40	PIN
		41	SNAP RING 6
		42	SPRING WASHER 6 (QTY 4)
		43	HEXAGON SOCKET HEAD/ CAP SCREW M6-25 (QTY 4)
3190BK24C	PUMP KIT	24	PUMP BASE
		25	STEEL BALL 8
		26	COPPER WASHER
		27	PUMP CYLINDER
		28	O-RING 36-3.5
		29	DUST SEAL
		30	PUMP PISTON
		31	SPRING
		32	WASHER
		33	BOLT. CHECK VALVE
		44	O-RING 11-1.9 (QTY 2)
		45	HEXAGON SOCKET HEAD/CAP SCREW M10-55 (QTY 4)
		48	DUST CAP
		49	SPRING
		50	SPRING RETAINER
		51	CONNECTING ROD
		52	SCREW M8-10
		109	SPRING WASHER M10
		120	SCREW
		121	O-RING 11-1.9
122	SPRING		
123	SPRING GUIDE		
124	STEEL BALL 6		
125	STEEL BALL 1/4 (QTY 2)		
126	SCREW M8-7		
127	SCREW M8-10		
3190K101C	HANDLE KIT	101	HANDLE
		102	GRIP
		103	BOLT M10-45
		104	NUT M10
		108	WASHER M10

ONLY PARTS WITH A "PART ORDER NUMBER" ARE AVAILABLE
 DO NOT COPY OR DISTRIBUTE THIS MATERIAL WITHOUT PERMISSION OF AFF, INC.



MODEL 3190B - 1,100 lb. Transmission Jack

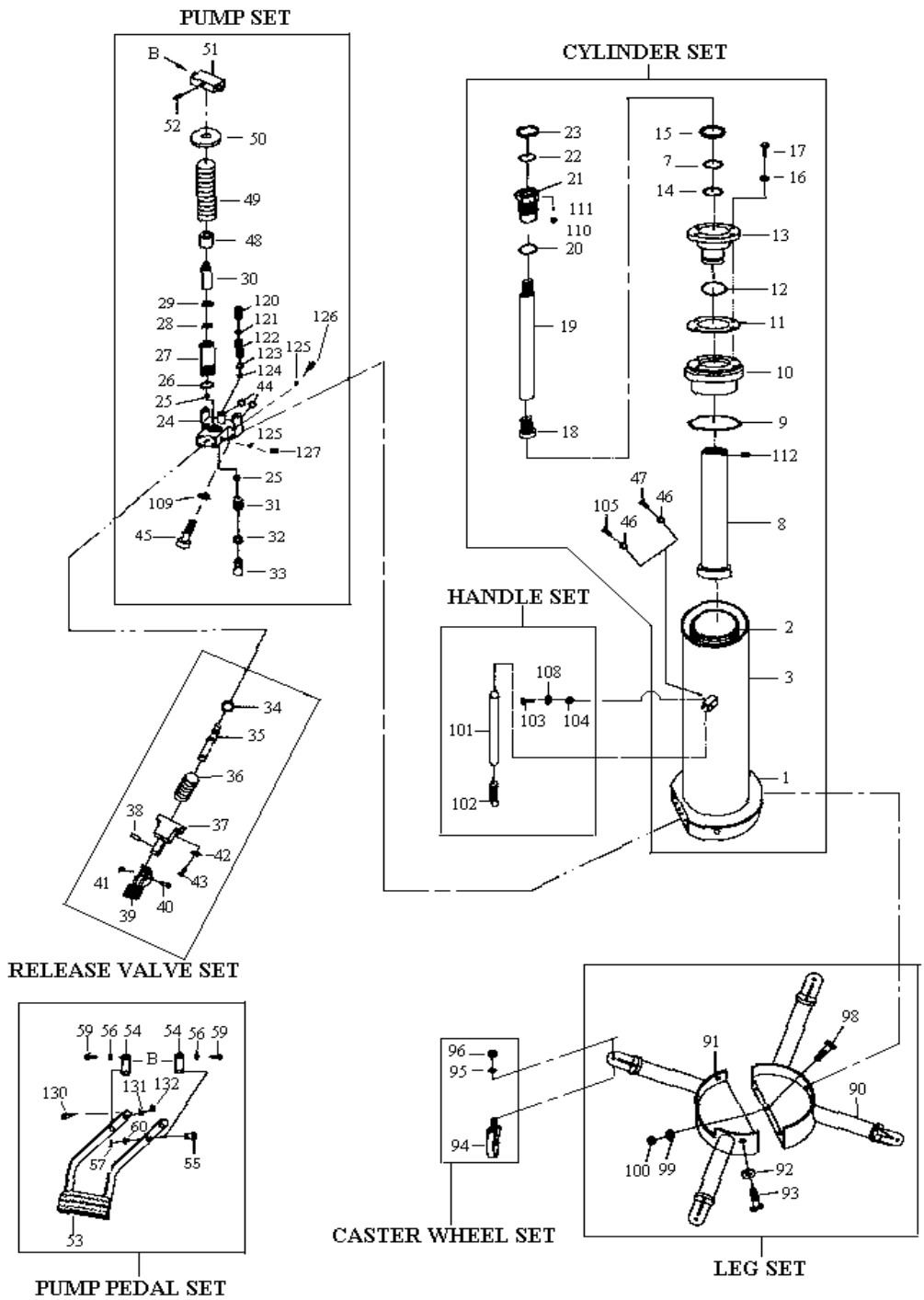
UPDATED 9-05

PART		KIT INCLUDES	
ORDER NUMBER	KIT DESCRIPTION	REF. #	DESCRIPTION
3190BK53C	PUMP PEDAL KIT	53	PEDAL
		54	LINK (QTY 2)
		55	COTTER LINK 14-20 (QTY 2)
		56	WASHER 8 (QTY 4)
		57	SNAP PIN 4-20 (QTY 2)
		59	SCREW M8-12
		60	WASHER 14 (QTY 2)
		130	SCREW (QTY 2)
		131	WASHER M10 (QTY 2)
		132	NUT M10 (QTY 2)
3190BK94C	CASTER KIT	94	CASTER ASSEMBLY
		95	SPRING WASHER
		96	NUT
NOT AVAILABLE		90	LEG ASSEMBLY
NOT AVAILABLE		91	LEG ASSEMBLY
NOT AVAILABLE		92	SPRING WASHER
NOT AVAILABLE		93	BOLT
NOT AVAILABLE		98	BOLT
NOT AVAILABLE		99	SPRING WASHER
NOT AVAILABLE		100	NUT
NOT AVAILABLE		107	HANDLE

ONLY PARTS WITH A "PART ORDER NUMBER" ARE AVAILABLE

DO NOT COPY OR DISTRIBUTE THIS MATERIAL WITHOUT PERMISSION OF AFF, INC.

HYDRAULIC UNIT



ONLY PARTS WITH A "PART ORDER NUMBER" ARE AVAILABLE
DO NOT COPY OR DISTRIBUTE THIS MATERIAL WITHOUT PERMISSION OF AFF, INC.

Head Assembly

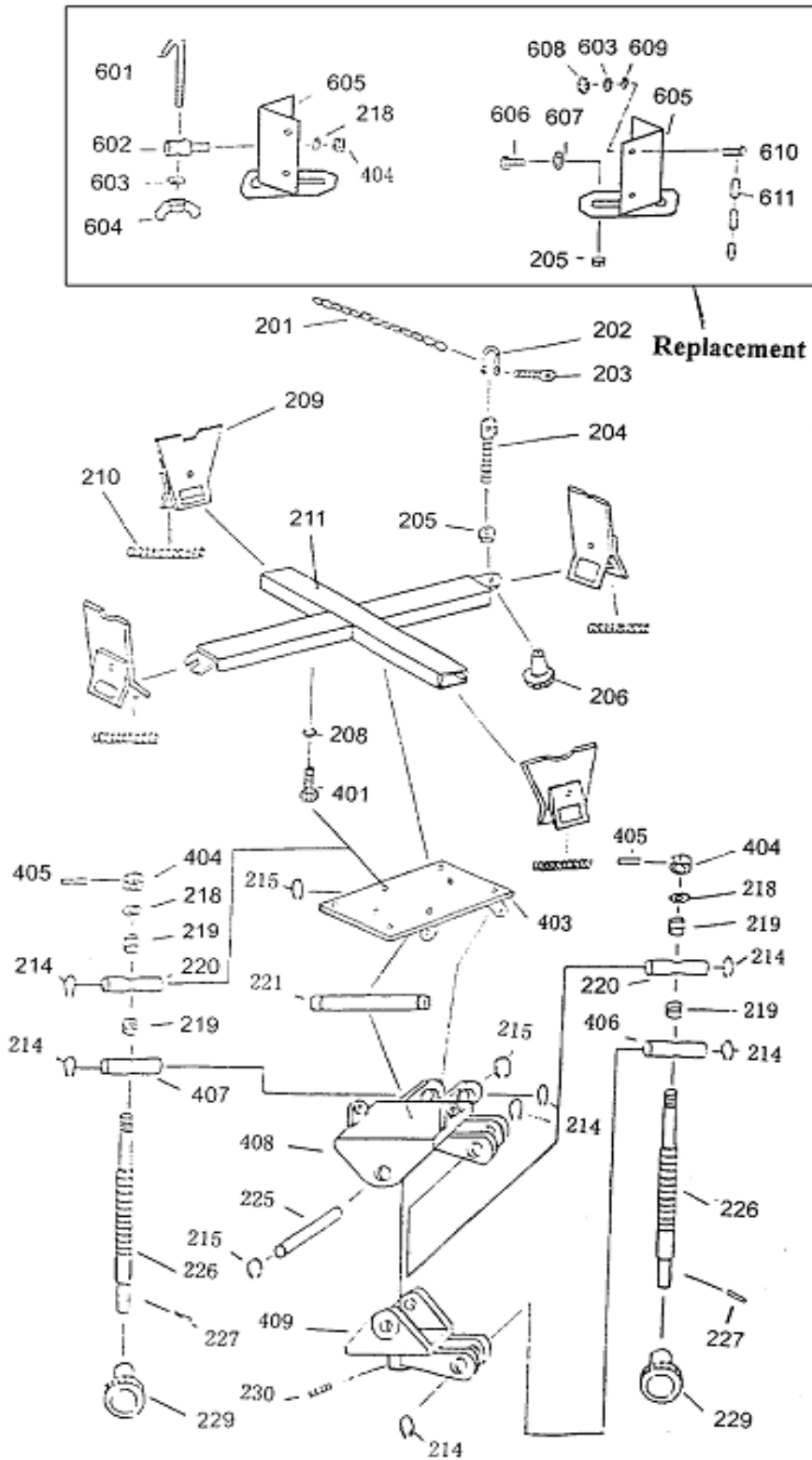
UPDATED 9-05

PART		KIT INCLUDES	
ORDER NUMBER	KIT DESCRIPTION	REF. #	DESCRIPTION
3193BK226C	ADJUSTMENT SCREW ASSEMBLY	214	RETAINING RING (4 REQ.)
		218	WASHER (QTY 2)
		219	BEARING (2 REQ.)
		220	STATIONARY ROD
		226	ADJUSTABLE SCREW
		227	SPRING PIN
		229	GRIP
		404	NUT M10
		405	PIN
		406	STATIONARY ROD
407	STATIONARY ROD		
3193K202C	CHAIN & BOLT ASSEMBLY	201	CHAIN
		202	SHACKLE
		203	HOOK PIN
		204	SCREW
		205	M12
		206	GRIP
		404	NUT M10 (QTY 2)
3193K209C	BRACKET ASSEMBLY	209	CLAMP
		210	SPRING
3193K210	SPRING	210	SPRING - PACKAGE OF 4
3193BK605C	RETAINER SET W/CHAINS	601	CLEVIS PIN (QTY 2)
		602	NUT(QTY 2)
		603	WASHER M8 (QTY 2)
		604	WING NUT M8 (QTY 2)
		605	STATIONARY PLATE (QTY 4)
		606	BOLT M12 X 35 (QTY 4)
		607	WASHER M12 (QTY 8)
		608	NUT M8 (QTY 2)
		609	WASHER M8 (QTY 2)
		610	BOLT M8X 25 (QTY 2)
		611	CHAIN (QTY 2)
		205	NUT M12 (4)
		404	NUT M10 (2)
NOT AVAILABLE		208	SPRING WASHER
NOT AVAILABLE		211	CROSS PIECE
NOT AVAILABLE		214	RETAINING RING
NOT AVAILABLE		215	RETAINING RING
NOT AVAILABLE		221	CONNECTING ROD
NOT AVAILABLE		225	CONNECTING ROD
NOT AVAILABLE		403	SADDLE PLATE
NOT AVAILABLE		408	SADDLE
NOT AVAILABLE		409	BOTTOM PLATE

*** ONLY PARTS WITH A "PART ORDER NUMBER" ARE AVAILABLE.**

DO NOT COPY OR DISTRIBUTE THIS MATERIAL WITHOUT PERMISSION OF AFF, INC.

Head Assembly



*** ONLY PARTS WITH A "PART ORDER NUMBER" ARE AVAILABLE**
DO NOT COPY OR DISTRIBUTE THIS MATERIAL WITHOUT PERMISSION OF AFF, INC.