



# MODEL 535 - 35 TON AIR/HYDRAULIC TRUCK JACK

PRICE SUBJECT TO CHANGE WITHOUT NOTICE

UPDATED 9-05

PART		KIT INCLUDES		1
ORDER NUMBER	KIT DESCRIPTION	REF. #	DESCRIPTION	
535K50	SPRING SUPPORT SET	31	SPRING WASHER 8M ( 4 REQ. )	
		32	NUT 8M ( 4 REQ. )	
		33	BOLT M8 X 35 (4 REQ. )	
		49	SPRING ( 4 )	
		50	SPRING PLATE	
535KHU	HYDRAULIC UNIT COMPLETE	4	AIR PUMP	
		7	HANDLE SOCKET	
		8	SHAFT PIN ( 3 REQ. )	
		9	COTTER PIN ( 3 REQ. )	
		10	PUMP PLUNGER	
		11	RETAINER	
		12	O-RING	
		13	DUST PROOF RING	
		14	PUMP RESERVOIR	
		15	COPPER WASHER	
		16	STEEL BALL M6 ( 4 REQ. )	
		17	PLUNGER CONNECTING ROD	
		18	RELEASE VALVE SCREW	
		19	RELEASE VALVE SEAL	
		20	STEEL BALL M7.5 ( 3 REQ. )	
		21	PIN	
		22	VALVE SPRING ( 2 REQ. )	
		23	COPPER WASHER ( 2 REQ. )	
		24	SCREW ( 2 REQ. )	
		25	SCREW PLUG ( 2 REQ. )	
		26	PLUG WASHER ( 2 REQ. )	
		27	OVERLOAD VALVE SCREW ( 2 REQ. )	
		28	SAFTEY VALVE SPRING ( 2 REQ. )	
		29	OVERLOAD TAPERING VALVE ( 2 REQ. )	
		30	FILTER NET ( 2 REQ. )	
		34	CYLINDER	
		35	AIR PUMP COPPER WASHER	
		36	CYLINDER BOTTOM SEAL	
37	RESERVOIR			
38	PLUG SCREW			
39	SEAL WASHER			
40	STEEL BALL RETAINER ( 2 REQ. )			
41	CYLINDER TOP SEAL			
42	O-RING			
43	TOP NUT			
44	TRACK RING			
45	SEAL WASHER			
46	RAM HEADER			
47	BACK UP RING			
48	RAM			

**DO NOT COPY OR DISTRIBUTE THIS MATERIAL WITHOUT PERMISSION OF AFF, INC.**



# MODEL 535 - 35 TON AIR/HYDRAULIC TRUCK JACK

PRICE SUBJECT TO CHANGE WITHOUT NOTICE

UPDATED 9-05

PART		KIT INCLUDES	
ORDER NUMBER	KIT DESCRIPTION	REF. #	DESCRIPTION
535KRK	REPAIR KIT	12	O-RING
		13	DUST PROOF SEAL
		15	COPPER WASHER
		16	STEEL BALL - 6MM ( 4 REQ. )
		18	RELEASE VALVE SEAL
		19	RELEASE VALVE SEAL
		20	STEEL BALL - 7.5MM ( 3 REQ. )
		21	RELEASEVALVE CROSS PIN
		22	VALVE SPRING ( 2 REQ. )
		23	COPPER WASHER ( 2 )
		26	PLUG WASHER ( 2 REQ. )
		28	SAFETY VALVE SPRING ( 2 REQ. )
		29	OVERLOAD TAPERING VALVE ( 2 REQ. )
		30	FILTER NET ( 2 REQ. )
		35	AIR PUMP COPPER WASHER
		36	CYLINDER TOP SEAL
		39	SEAL WASHER
		41	CYLINDER TOP SEAL
		42	O-RING
		44	TRACK RING
		45	SEAL WASHER
		47	BACK UP RING
		71-2	O-RING ( 2REQ. )
		74	WASHER ( 2 req.)
		77	SEAL
		78	O-RING (2REQ. )
		79	SQUARE RING 2REQ.
		87	NL RETAINER
88	"Y" SEAL		
93	TREAD SEAL		
535K62	HANDLE ASM.	57	CONNECTOR
		58	SPRING PIN 4 X 24
		59	BOLT M8 X 50
		60	SPRING WASHER
		61	NUT M8
		62	HANDLE
		63	DISCHARGE ROD
		64	RETAINER RING
		65	BOLT M4 X 6
		66	SPRING PIN 4 X 24
		67	KNOB
535K51	BASE	51	LOWER COVER
535K52	WHEEL COMPLETE	52	WHEEL
		53	WASHER
		54	SPLIT RING
535K6	PUMP HANDLE	5	HANDLE UPPER
		6	HANDLE LOWER

DO NOT COPY OR DISTRIBUTE THIS MATERIAL WITHOUT PERMISSION OF AFF, INC.



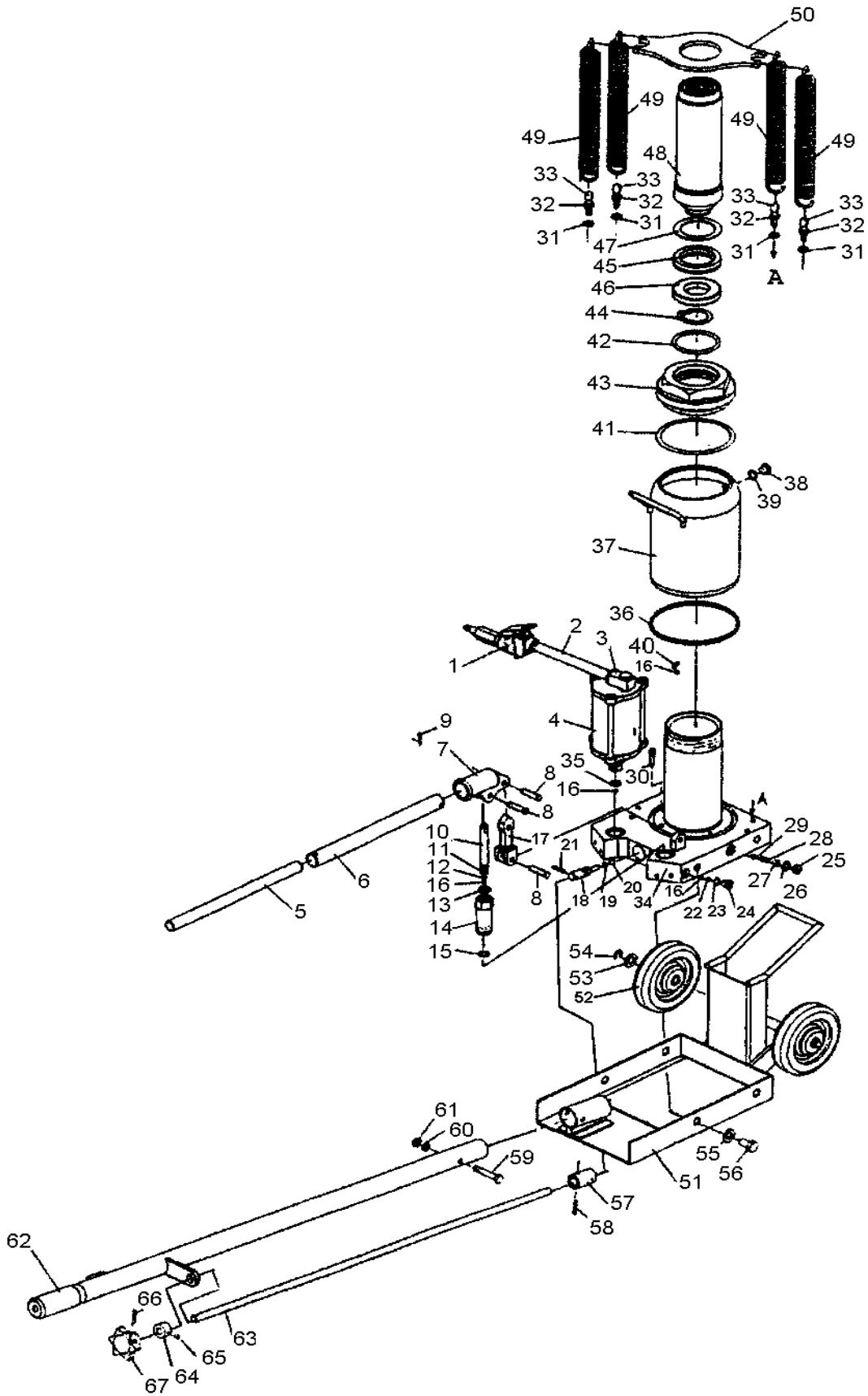
# MODEL 535 - 35 TON AIR/HYDRAULIC TRUCK JACK

PRICE SUBJECT TO CHANGE WITHOUT NOTICE

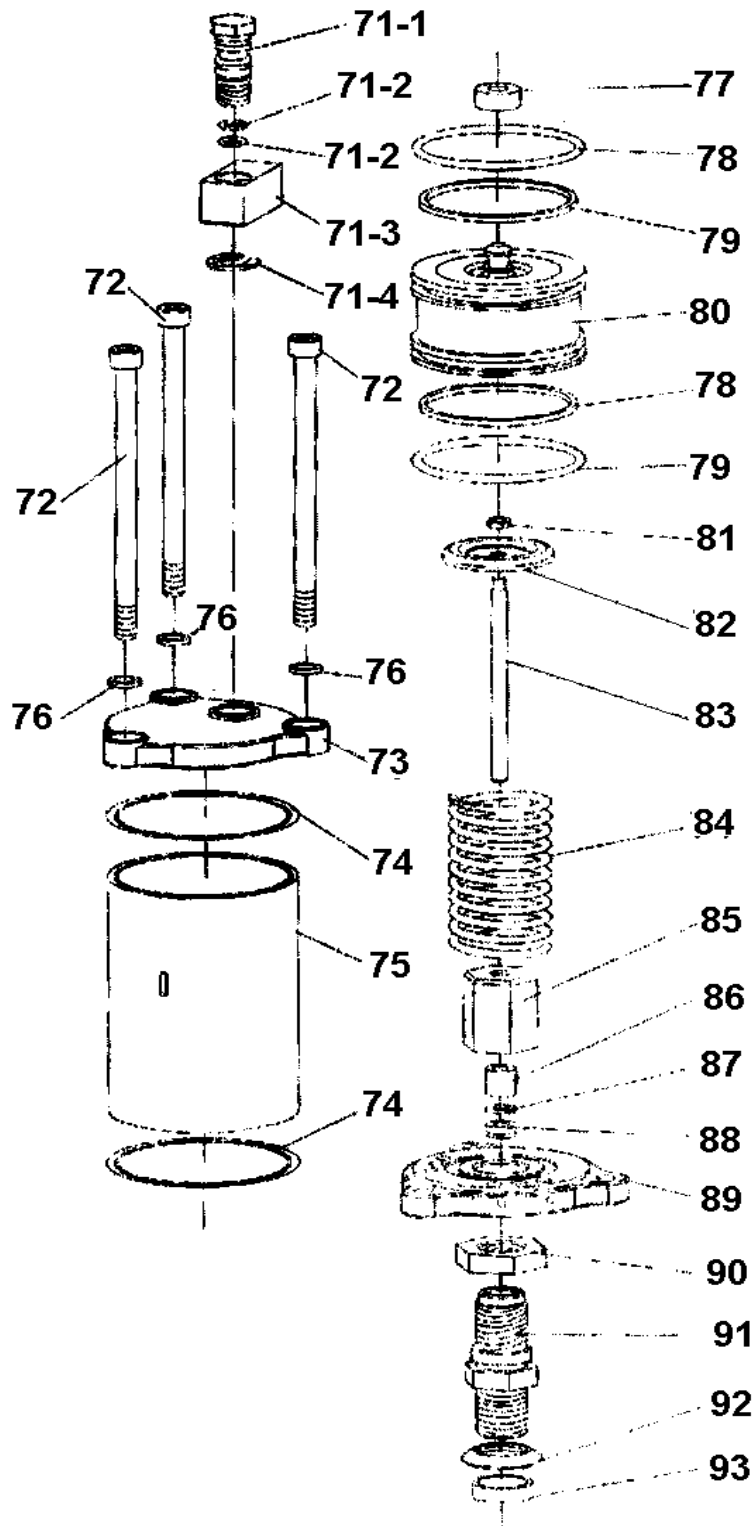
UPDATED 9-05

PART		KIT INCLUDES	
ORDER NUMBER	KIT DESCRIPTION	REF. #	DESCRIPTION
535K4C	AIRMOTOR COMPLETE	71-1	TUBE CONNECTOR
		71-2	O-RING 10 X 1.8 ( 2 REQ. )
		71-3	REMOVABLE BASE
		71-4	SPLIT WASHER
		72	HEX-SOCKET SCREW
		73	COVER
		74	WASHER
		75	AIR PUMP BODY
		76	SPRING WASHER
		77	SEAL
		78	O-RING 63.5 X 3.55 ( 2 REQ. )
		79	SQUARE RING ( 2 REQ. )
		80	PISTON
		81	NUT M5
		82	BLOCK
		83	PLUNGER
		84	SPRING
		85	NUT
		86	PACKING GUIDE
		87	NL RETAINER
		88	"Y" SEAL
89	COVER		
90	ADJUSTING NUT		
91	PLUNGER COVER		
92	COVER		
93	THREAD SEAL		
535K2	AIR HOSE	2	AIRHOSE
535K1C	AIR VALVE	1	AIR VALVE COMPLETE
535K73	COVER SET	71-1	TUBE CONNECTOR
		71-2	O-RING 10 X 1.8 ( 2 REQ. )
		71-3	REMOVABLE BASE
		71-4	SPLIT WASHER
		73	COVER
		74	SEAL WASHER

DO NOT COPY OR DISTRIBUTE THIS MATERIAL WITHOUT PERMISSION OF AFF, INC.



DO NOT COPY OR DISTRIBUTE THIS MATERIAL WITHOUT PERMISSION OF AFF, INC.



DO NOT COPY OR DISTRIBUTE THIS MATERIAL WITHOUT PERMISSION OF AFF, INC.