



MODEL 350 - 3.5 TON HEAVY-DUTY FLOOR JACK

UPDATED 10-05

| PART ORDER NUMBER | KIT DESCRIPTION | KIT INCLUDES | |
|----------------------|---------------------------------|--------------|-----------------------------|
| | | REF. # | DESCRIPTION |
| 350K35 | TWO PIECE HANDLE COMPLETE | 34 | HEX BOLT |
| | | 35 | HANDLE LOWER |
| | | 36 | HANDLE UPPER |
| | | 44 | HANDLE BUMPER |
| 350K26 | HANDLE RETAINER | 26 | BOLT |
| 350K6 | SADDLE COMPLETE | 6 | SADDLE |
| | | 43 | RUBBER COVER |
| 350KHU | HYDRAULIC UNIT COMPLETE | 24 | HYDRAULIC UNIT COMPLETE |
| 350K27A | RELEASE VALVE COMPLETE | H19 | O-RING |
| | | H20 | RELEASE VALVE |
| 350K2 | FRONT WHEEL | 1 | RETAINING RING |
| | | 2 | FLAT WHEEL |
| 350K12 | CASTER | 11 | LOCK NUT |
| | | 12 | CASTER ASSEMBLY |
| 350K37 | HANDLE SPRING | 37 | HANDLE RETURN SPRING (PAIR) |
| 350KRK | REPAIR KIT | H3 | O-RING |
| | | H4 | O-RING |
| | | H5 | RETAINING RING |
| | | H7 | O-RING |
| | | H9 | SEAL WASHER |
| | | H10 | O-RING |
| | | H11 | SEAL WASHER |
| | | H16 | SPLIT PIN |
| | | H18 | BALL |
| | | H19 | O-RING |
| | | H21 | BALL 7 |
| | | H22 | BALL 9.5 |
| | | H25 | SEAL WASHER |
| | | H29 | SEAL WASHER |
| | | H30 | O-RING |
| | | H31 | OIL FILL PLUG |
| H33 | O-RING | | |
| H34 | O-RING | | |

*** ONLY PARTS WITH A "PART ORDER NUMBER" ARE AVAILABLE FOR SALE.**

DO NOT COPY OR DISTRIBUTE THIS MATERIAL WITHOUT PERMISSION OF AFF, INC.



MODEL 350 - 3.5 TON HEAVY-DUTY FLOOR JACK

UPDATED 10-05

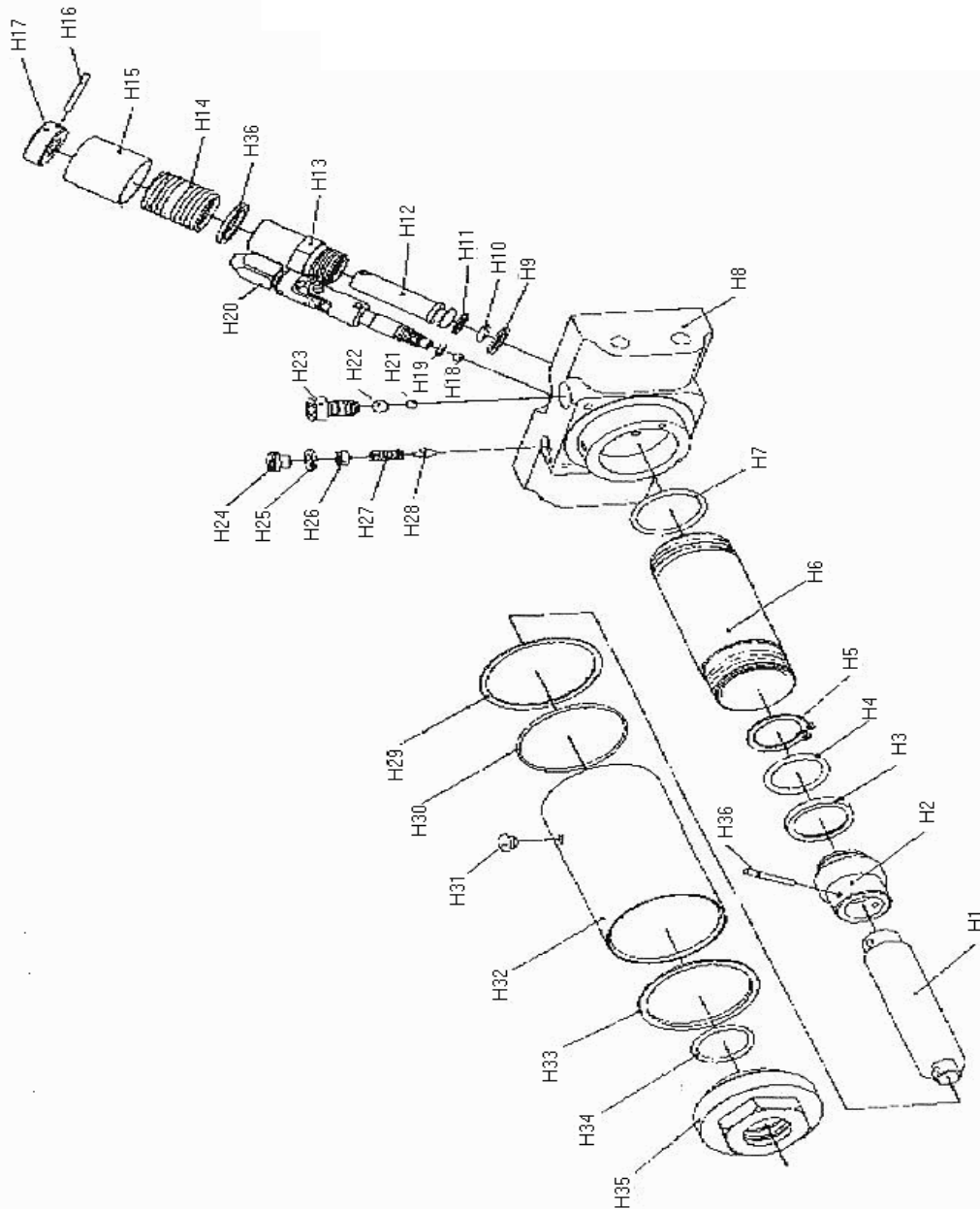
| PART ORDER NUMBER | KIT DESCRIPTION | KIT INCLUDES | |
|----------------------|------------------|--------------|----------------------|
| | | REF. # | DESCRIPTION |
| 350K13 | PUMP COMPLETE | H9 | SEAL WASHER |
| | | H10 | O-RING |
| | | H11 | SEAL WASHER |
| | | H12 | PUMP PISTON |
| | | H13 | PUMP CYLINDER |
| | | H36 | PUMP INNER COVER |
| | | H14 | PUMP RETURN SPRING |
| | | H15 | SPRING COVER |
| | | H16 | SPLIT PIN 4 X 32 |
| | | H17 | PUMP COVER |
| 350K19 | YOKE COMPLETE | 9 | BOLT X 2 |
| | | 10 | LOCK WASHER X 2 |
| | | 19 | HANDLE SOCKET |
| | | 25 | ROLLER WHEEL |
| | | 26 | BOLT |
| | | 27 | PIN 10 X 45 |
| | | 28 | PIN |
| | | 37 | HANDLE RETURN SPRING |
| NOT AVAILABLE | | 3 | SIDE PLATE ASSEMBLY |
| NOT AVAILABLE | | 4 | BOLT (4) |
| NOT AVAILABLE | | 5 | LINKAGE |
| NOT AVAILABLE | | 7 | SHAFT ARM |
| NOT AVAILABLE | | 8 | RETAINING RING (2) |
| NOT AVAILABLE | | 13 | LOCK NUT M16 (2) |
| NOT AVAILABLE | | 14 | RETAINING RING (2) |
| NOT AVAILABLE | | 15 | SPRING WASHER (4) |
| NOT AVAILABLE | | 16 | HEX BOLT M12X20 (4) |
| NOT AVAILABLE | | 17 | PULL ROD |
| NOT AVAILABLE | | 18 | HEX BOLT M12 (2) |
| NOT AVAILABLE | | 20 | BLOCK LINKAGE |
| NOT AVAILABLE | | 21 | GREASE FITTING |
| NOT AVAILABLE | | 22 | SPLIT PIN 4X25 |
| NOT AVAILABLE | | 23 | SPRING |
| NOT AVAILABLE | | 38 | WASHER |
| NOT AVAILABLE | | 39 | INSPECTION PLATE |
| NOT AVAILABLE | | 40 | SCREW (4) |
| NOT AVAILABLE | | 41 | WASHER |
| NOT AVAILABLE | | 42 | HEX NUT |

*** ONLY PARTS WITH A "PART ORDER NUMBER" ARE AVAILABLE FOR SALE.**

DO NOT COPY OR DISTRIBUTE THIS MATERIAL WITHOUT PERMISSION OF AFF, INC.

MODEL 350 - 3.5 TON HEAVY-DUTY FLOOR JACK HYDRAULIC UNIT

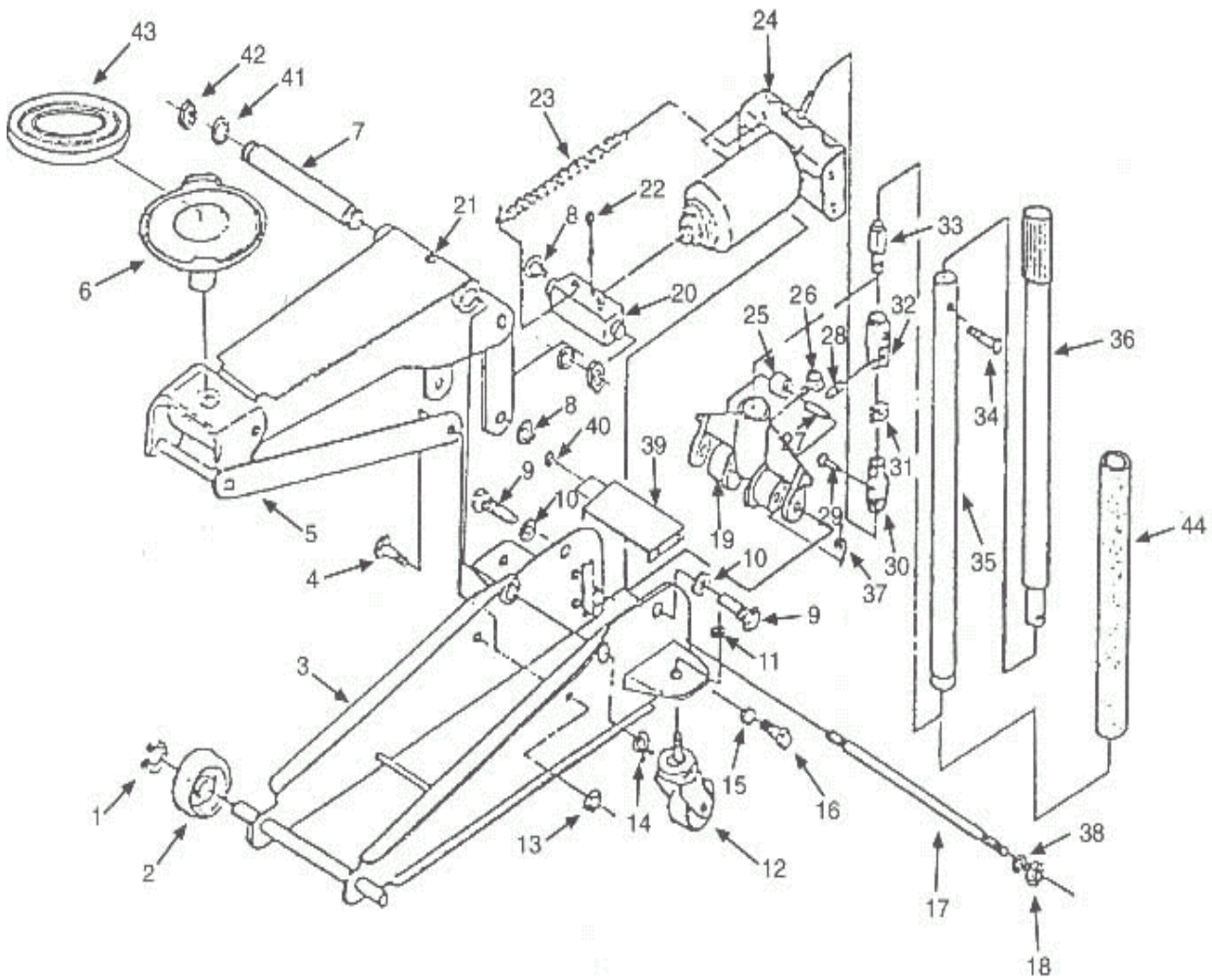
UPDATED 7-04



*** ONLY PARTS WITH A "PART ORDER NUMBER" ARE AVAILABLE FOR SALE.**

DO NOT COPY OR DISTRIBUTE THIS MATERIAL WITHOUT PERMISSION OF AFF, INC.

MODEL 350 - 3.5 TON HEAVY-DUTY FLOOR JACK EXPLODED VIEW



*** ONLY PARTS WITH A "PART ORDER NUMBER" ARE AVAILABLE FOR SALE.**

DO NOT COPY OR DISTRIBUTE THIS MATERIAL WITHOUT PERMISSION OF AFF, INC.